

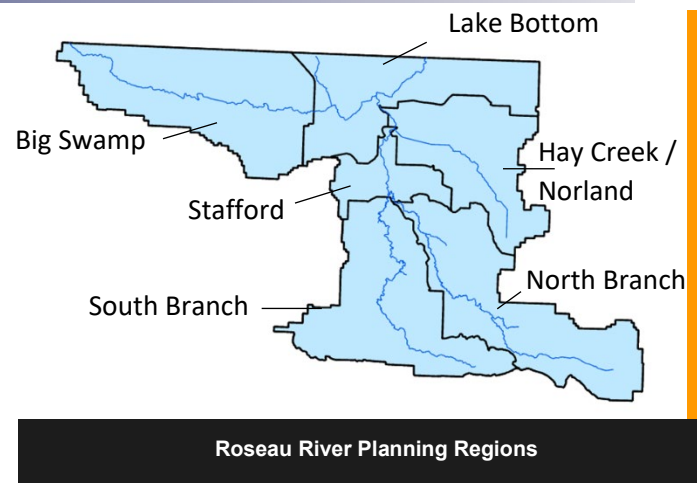
# Roseau River One Watershed, One Plan Policy Committee Meeting Summary



**May 2022**

The **Policy Committee** reviewed and approved:

**Vision Statement** - From the transition of peatlands to prairie and USA to Canada, Roseau Watershed Partners will continue working together on multi-benefit projects to improve water quality and quantity, agricultural productivity, habitat, biological communities, and recreational opportunity to support a thriving northern community. A vision statement is an inspirational statement of an idealistic emotional future of a company, group, or place.



## Prioritized Resource Concerns and Issues

- ✓ Four (4) resource categories with 19 issues were ranked by local importance along with location or Planning Region importance. Planning Regions are shown above.

## Land and Water Resource Narrative (Plan Section 2)

- ✓ A summary of watershed characteristics that includes landscape features, precipitation, water resources, stormwater / drainage systems, fish and wildlife habitat, existing land use, water-based recreation areas and relevant socio-economic demographics

To view in detail the prioritized Resource Concerns and Issues and the Narrative go to [www.roseauriver1w1p.org/building-the-plan-1](http://www.roseauriver1w1p.org/building-the-plan-1).

**For more information, please visit:** <https://www.roseauriver1w1p.org/>  
**or contact a Steering Team member:**

**Tracy Halstensgard:** Roseau River WD, [rrwd@mncable.net](mailto:rrwd@mncable.net), (218) 463-0313

**Torin McCormack:** Roseau River WD, [rrwd@mncable.net](mailto:rrwd@mncable.net), (218) 463-0313

**Janine Lovold:** Roseau SWCD, [janine.lovold@roseau.mnswcd.org](mailto:janine.lovold@roseau.mnswcd.org), (218) 463-1903

**Scott Johnson:** Roseau SWCD, [scott.johnson@roseau.mnswcd.org](mailto:scott.johnson@roseau.mnswcd.org), (218) 463-1903